

Date: 20-05-2022

# Health Bulletin

Time: 6:00 PM

Bulletin No. 833 (since 15<sup>th</sup> March 2020)



Positive Today: **12**



Recovered Today: **21**



Death Today: **00**



Active Cases: **84**

**S<sup>+</sup>vtv**

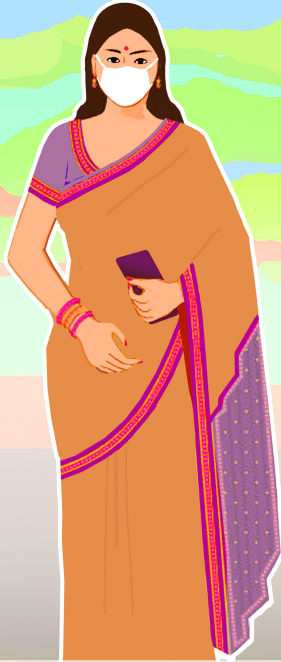
Sample Positivity today: **0.90%**

**R%**

Recovery Percentage: **96.10%**

1. Total cumulative Positive COVID-19 detected since 01.01.2022: **92693**
2. Total Number (%) of COVID-19 Patients Treated/ Cured since 01.01.2022: **89080 (96.10%)**
3. Total Number (%) of COVID-19 patients migrated out of state since 01.01.2022: **3254 (3.51%)**
4. Total Number (%) of COVID-19 Deaths since 01.01.2022: **275 (0.30%)**
5. Number of samples found negative for COVID-19 today: **1324**
6. Total number of samples sent for COVID-19 testing today: **2035**
7. Total number of cumulative samples found negative since 01.01.2022: **1336387**

हमने खुद को सुरक्षित किया है  
हम अधिक सजग हुये हैं!



कोविड सुरक्षा प्रोटोकाल का  
पालन अवश्य करते रहें

जो रह गये हैं वो अपना टीकाकरण अवश्य करवायें



दवाई भी.. कड़ाई भी



मास्क का  
प्रयोग करें



साबुन से हाथ धोयें  
या सैनेटाइजर का  
प्रयोग करें





उत्तराखण्ड शासन



एनएचएम मिशन



# Uttarakhand State Control Room

## Integrated Disease Surveillance Programme

Directorate of Medical Health &amp; Family Welfare, Uttarakhand, Dehradun



### Detailed Status of Sample Tested

Districts	Samples Sent to Labs Today	Negative		Positive		Cumulative Samples Tested Since 01.01.2022	Results Awaited (including sample sent to labs today)
		Negative in last 24 hours	Negative Cumulative Since 01.01.2022	Positive in last 24 hours	Positive Cumulative Since 01.01.2022		
Almora	66	124	64285	0	4528	68807	18
Bageshwar	47	50	34798	0	2088	36882	28
Chamoli	75	54	47850	0	3202	51050	32
Champawat	60	4	61802	0	1911	63710	19
Dehradun	401	337	366832	8	33135	399832	78
Haridwar	79	90	305952	3	13127	319049	11
Nainital	432	328	84237	0	11356	95523	56
Pauri Garhwal	57	56	93319	0	5275	98587	12
Pithoragarh	73	21	40737	0	2559	43284	21
Rudraprayag	22	17	27001	0	2703	29704	25
Tehri Garhwal	107	95	35742	0	2362	38097	48
US Nagar	478	129	135159	0	8802	143937	56
Uttarkashi	138	19	38673	1	1645	40316	44
<b>Total</b>	<b>2035</b>	<b>1324</b>	<b>1336387</b>	<b>12</b>	<b>92693</b>	<b>1428778</b>	<b>448</b>

### Details of Districts having Positive COVID-19 Cases

Districts	No. of Positive Cases Since 01.01.2022	No. of Positive Cases Treated/ Cured Since 01.01.2022	Active Cases in the District	Deaths Since 01.01.2022	Migrated Positive Cases Since 01.01.2022
Almora	4528	4136	1	4	387
Bageshwar	2088	2001	0	0	87
Chamoli	3202	3091	2	3	106
Champawat	1911	1890	0	1	20
Dehradun	33135	32537	57	174	367
Haridwar	13127	12861	7	25	234
Nainital	11356	11276	6	29	45
Pauri Garhwal	5275	4287	2	18	968
Pithoragarh	2559	2420	0	4	135
Rudraprayag	2703	2574	0	2	127
Tehri Garhwal	2362	2022	4	5	331
U.S. Nagar	8802	8517	2	5	278
Uttarkashi	1645	1468	3	5	169
<b>Total</b>	<b>92693</b>	<b>89080</b>	<b>84</b>	<b>275</b>	<b>3254</b>



# Uttarakhand State Control Room

Integrated Disease Surveillance Programme

Directorate of Medical Health & Family Welfare, Uttarakhand, Dehradun



## COVID-19 Vaccination

**20<sup>th</sup> May 2022**

☛ Sessions Held Today:	<b>981</b>
☛ Number of Beneficiaries Vaccinated Today:	<b>17564</b>
☛ Total Number of Beneficiaries Partially Vaccinated:	<b>8986127</b>
☛ Total Number of Beneficiaries Fully Vaccinated:	<b>8302847</b>
☛ Total Number of Beneficiaries Given Precaution Dose:	<b>551339</b>

### Details of Beneficiaries Vaccinated in Uttarakhand

Districts	Citizens						Health Care Worker		Front Line Worker		Cumulative Precaution Dose Coverage	Last 24 hrs coverage	
	12-14 Yrs 1st Dose	12-14 Yrs 2nd Dose	15-17 years 1st Dose Coverage	15-17 years 2nd Dose Coverage	18+ years 1st Dose Coverage	18+ years 2nd Dose Coverage	1 <sup>st</sup> Dose Coverage	2 <sup>nd</sup> Dose Coverage	1 <sup>st</sup> Dose Coverage	2 <sup>nd</sup> Dose Coverage		1st And 2nd Dose	Precaution Dose
<b>Almora</b>	17673	9178	28973	22775	383552	357029	6022	6032	9956	9761	37461	148	308
<b>Bageshwar</b>	9481	6122	14096	12942	186310	172465	2514	2521	2323	2401	22384	153	214
<b>Chamoli</b>	14594	10636	19693	18486	275134	270932	3988	4021	6493	6634	32320	248	381
<b>Champawat</b>	9667	3462	13306	9202	184457	171615	2255	2312	7583	7462	15828	151	75
<b>Dehradun</b>	57778	23896	100627	75156	1578500	1479555	37245	36718	30670	31292	132408	1911	472
<b>Haridwar</b>	62753	6393	79384	41325	1514896	1454489	17786	17617	48461	48446	57425	2263	194
<b>Nainital</b>	35452	15530	51603	38302	758161	733541	14196	13983	20110	20207	56457	919	196
<b>Pauri</b>	20355	8571	32358	26623	454477	425663	7922	7927	7101	7182	40543	648	187
<b>Pithoragarh</b>	13868	7069	23406	18788	327372	317275	4095	4112	8321	8413	23993	815	230
<b>Rudraprayag</b>	8199	4311	12575	10765	173788	160393	2466	2456	2692	2713	13449	159	277
<b>Tehri</b>	21502	12552	31030	26891	399978	363225	6254	6313	4923	5041	36888	628	372
<b>US Nagar</b>	52551	22537	85445	59441	1357302	1354990	12493	12579	34790	33943	54751	5149	474
<b>Uttarkashi</b>	11762	4462	18078	13195	236871	224401	3461	3487	5000	5091	27432	705	287
<b>Total</b>	<b>335635</b>	<b>134719</b>	<b>510574</b>	<b>373891</b>	<b>7830798</b>	<b>7485573</b>	<b>120697</b>	<b>120078</b>	<b>188423</b>	<b>188586</b>	<b>551339</b>	<b>13897</b>	<b>3667</b>